

Installation guide for the Water Saver

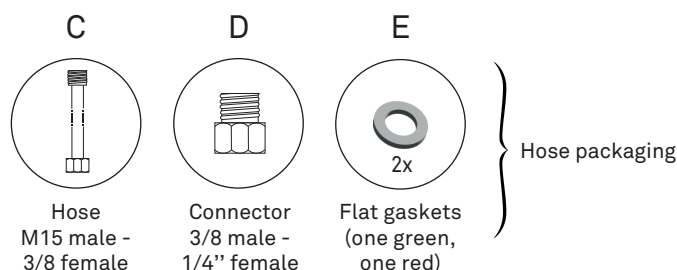
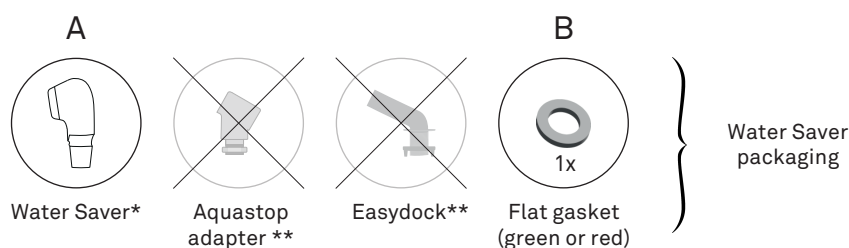
Thank you for taking part in the Water Saver field test. Your experience is very important to us.

First, you'll have to answer a few questions online about your salon environment. Next, you'll uninstall your regular showerhead with its hose and install the new hose and the Water Saver. You'll complete the questionnaire you started by giving feedbacks about the installation process.

A second questionnaire is to be completed after a few actual uses of the Water Saver.

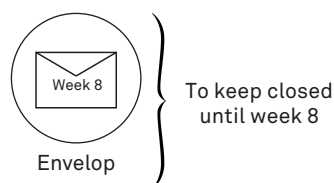
This document will guide you through all these steps, so please follow them with care.

Box content

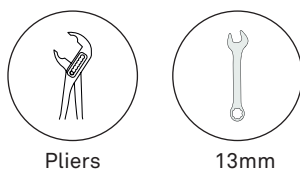


- * Be careful, the WaterSaver is docked in the Easydock in the box you'll have to separate the two pieces.
- ** No docking system needs to be installed with vacuum breaker

- Be careful, keep your regular showerhead and its hose, you'll have to reinstall it at the end of the field test.
- Be careful, keep everything you received, including the box, during all field test. You'll have to send back everything at the end.



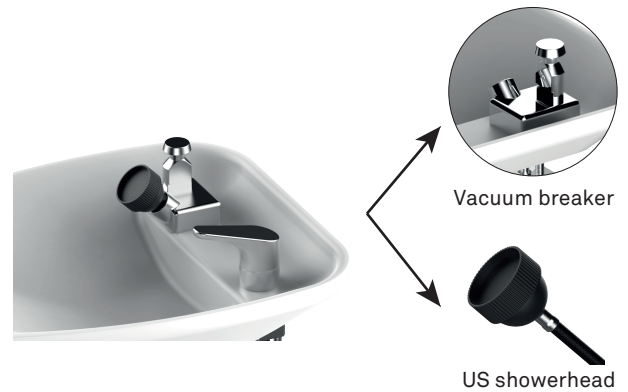
Tools needed (not in the box)



Installation instructions

Follow the instructions only if you have this type of backwash :

- Showerhead docking
- Showerhead

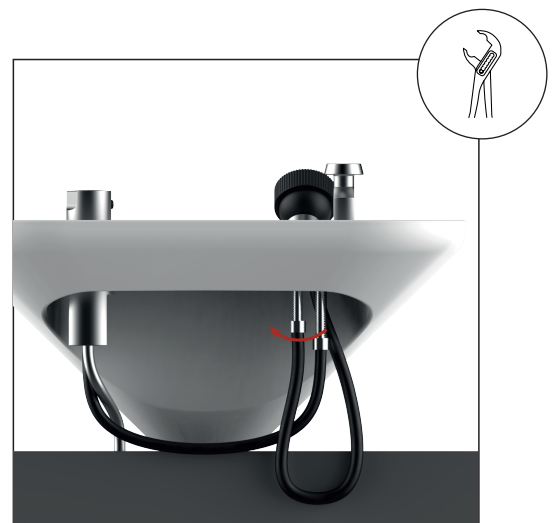


If you don't have this backwash basin type, scan the QR code to find the right guide to install the Water Saver. With it, you can also find help about installation problems, use, maintenance, ...)

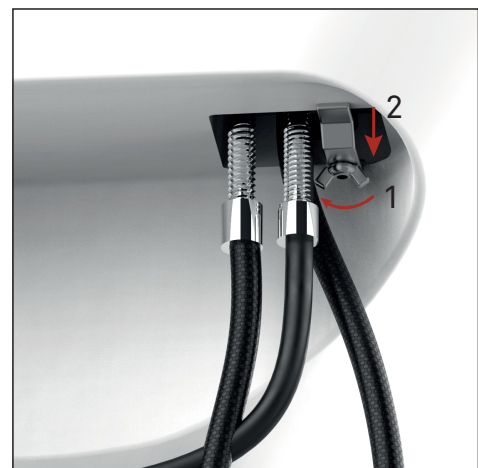


Step 1 - Regular showerhead and hose uninstallation

1.1 - Unscrew the hose of the showerhead from the vacuum breaker. You may need to use pliers



Note : If it's too difficult to access the hose to unscrew it, you can disassemble the vacuum breaker from the backwash. To do that, unscrew the wing nut (1) of the vacuum breaker and remove it from the holding bar (2). You can then pull out the holding bar. You can then loosen the vacuum breaker from the hole in the backwash.

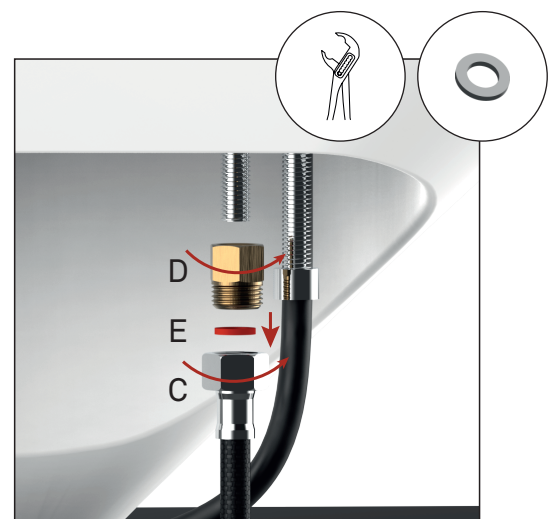


1.2 - Remove your regular showerhead from the vacuum breaker by pulling it out of the hole



Step 2 - New hose and Water Saver installation

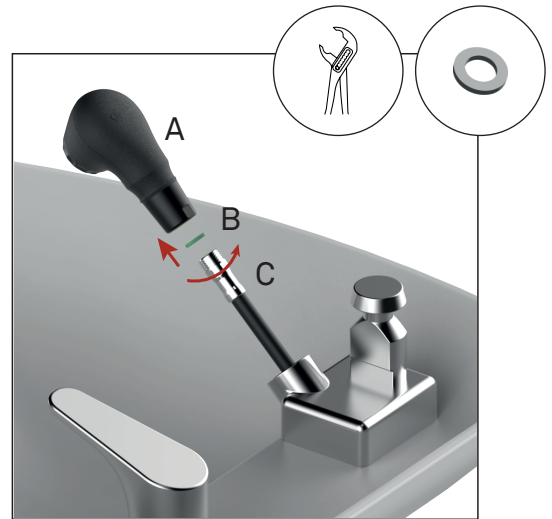
2.1 - Using pliers, screw the connector (D) to the outlet of the vacuum breaker. A gasket is already present between the water outlet and the connector, do not remove it. Then, place the red gasket (E) between the new hose (C) and the connector. Use pliers to screw the new hose to the connector.



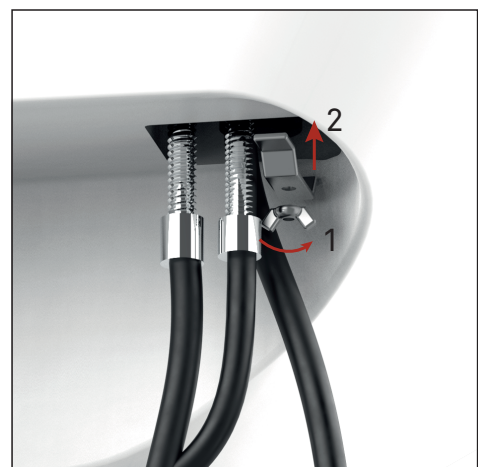
2.2 - Pass the hose (C) through the hole of the vacuum breaker.



2.3 - Screw the Water Saver (A) to the hose. Place the gasket (B) from the Water Saver packaging between the hose (C) and the Water Saver.



Note : If you removed the holding bar (2) of the vacuum breaker, don't forget to put it back in place with its wing nut (1).



2.4 - Dock the Water Saver, it's ready to use.

If you have more than one backwash, don't forget to equip them all with Water Saver to have a complete experience and avoid temperature fluctuations issue.



You can find tips on how to use correctly the Water Saver if you scan the QR code, or if you read the spare sheet showing best practices with Water Saver. Don't hesitate to show it to the other hairdressers of the salon.



watersaverus.gjosa.com

Questions about the installation process

Please complete the **online questionnaire** about the installation of the new hose and Water Saver.



Reminder

- Be careful, keep your regular showerhead and its hose, you'll have to reinstall them at the end of the field test
- Be careful, keep everything you received, including the box, during all field test. You'll have to send back everything at the end.



Questionnaire to fill after a few uses of the Water Saver

After a few uses of the Water Saver, please fill the second online questionnaire to give us a feedback about the use.

The other hairdressers of your salon shall also complete it during the first week you installed the Water Saver.

